

Operation Lifesaver Presents

# In the Interest of Safety



# Our Message is for Everyone



# The 3 E's of Operation Lifesaver

EDUCATION

ENGINEERING

ENFORCEMENT



It Happens Every Day...

**“Train Pushes Car Half Mile,  
Three People Die”**

**“Person Struck and Killed  
While Walking On Tracks”**

**Union-Tribune.**



# Any Time is Train Time



# Trains Can't Swerve



# Approximate Stopping Distance

*At 55 MPH*



200 Ft



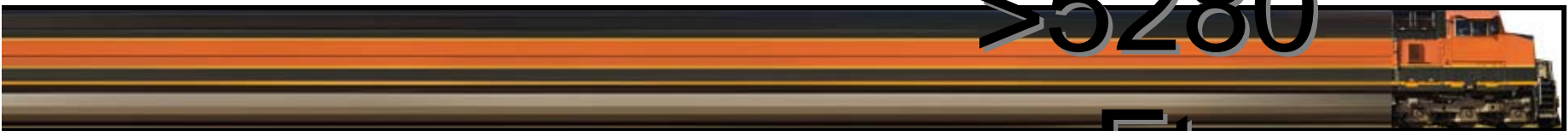
230 Ft



300 Ft



600 Ft



> 5280

Ft

# Weight Ratio



=

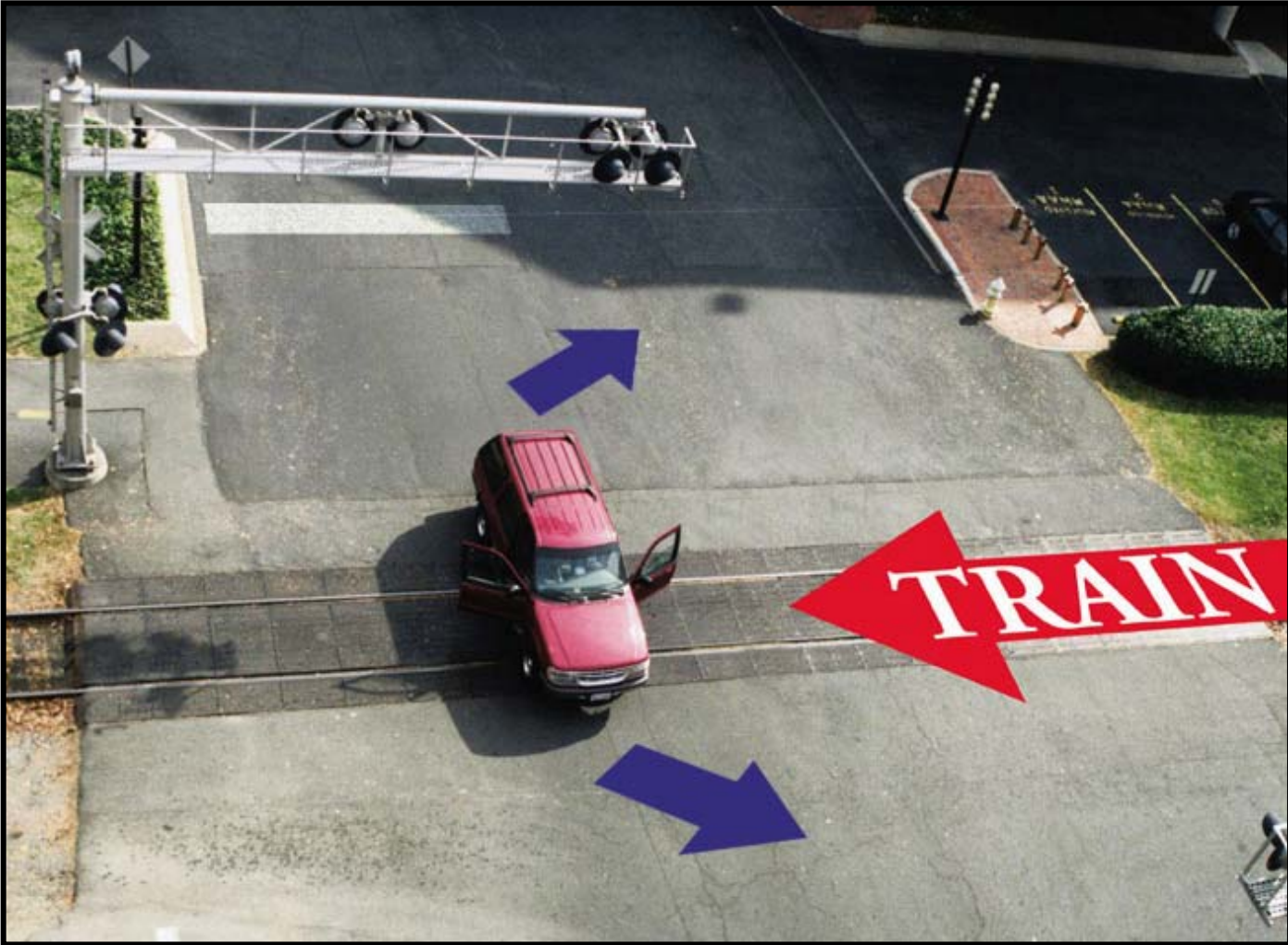






=





# Emergency Notification System

**TO REPORT STALLED  
VEHICLE ON TRACKS OR  
OTHER EMERGENCY  
CALL 1-800-555-5555  
AND REFER TO  
CROSSING #123-123A  
ON CHERRY STREET**



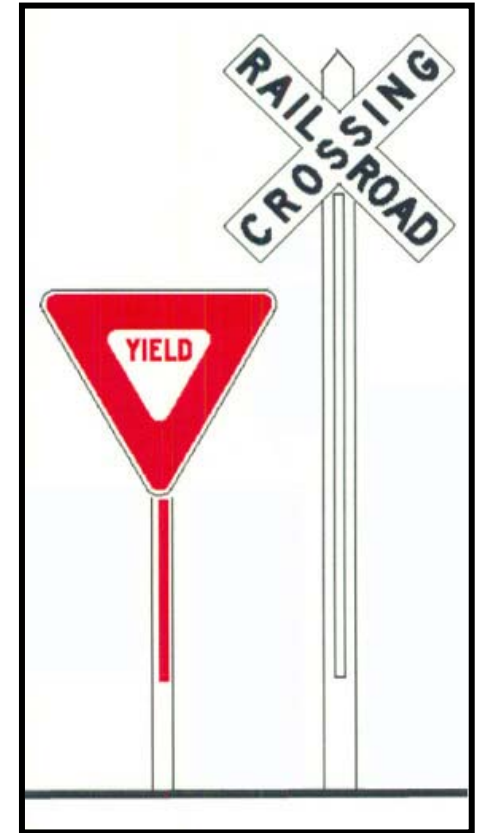
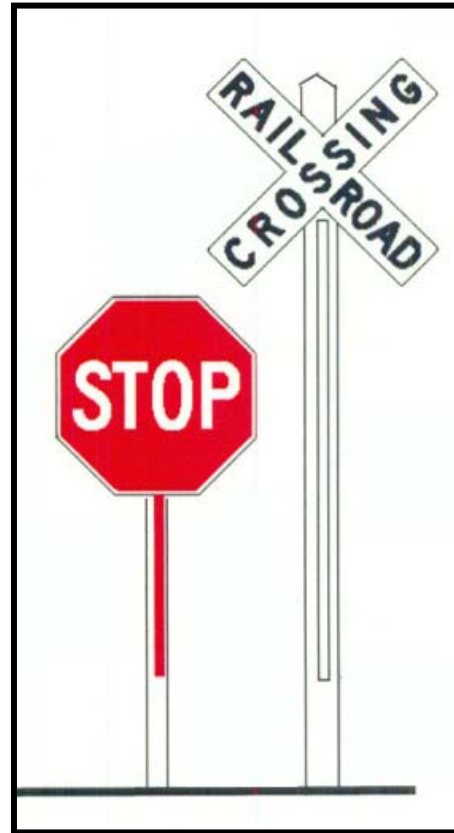
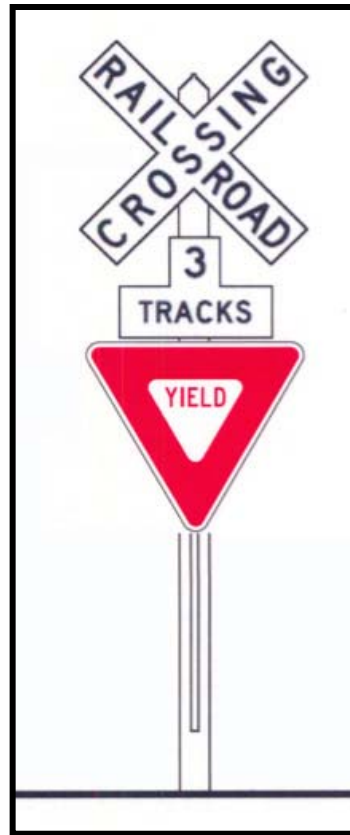
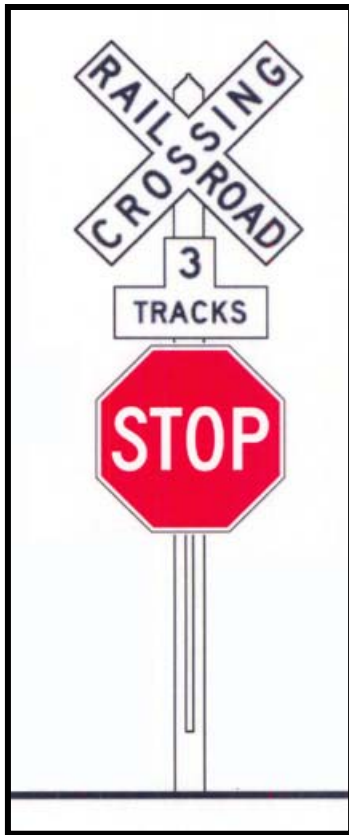


# Passive Crossing





# Passive Crossing Signs





**NO TRAIN HORN**

[www.fra.dot.gov](http://www.fra.dot.gov)

# Active Warning Devices



# Hazardous Proximity





# Driving Around the Gate



# Speed Perception





# Don't Pass, Shift or Stop







# Multiple Tracks



# Overdriving Headlights



# Distractions





LOOK,  
LISTEN &  
LIVE!®

RAIL CROSSING  
CROSS ROAD



**TRESPASSING IS  
DANGEROUS  
AND ILLEGAL**



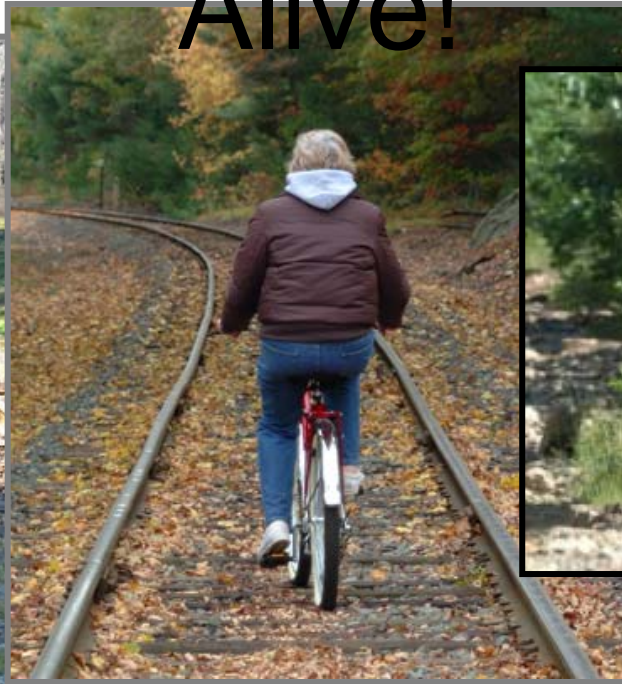
**STAY OFF  
RAILROAD TRACKS**

Stay Off!

Stay Away!

Stay Alive! ®

# Stay Off! Stay Away! Stay<sup>®</sup> Alive!





STAY OFF!

STAY AWAY!

STAY ALIVE!®









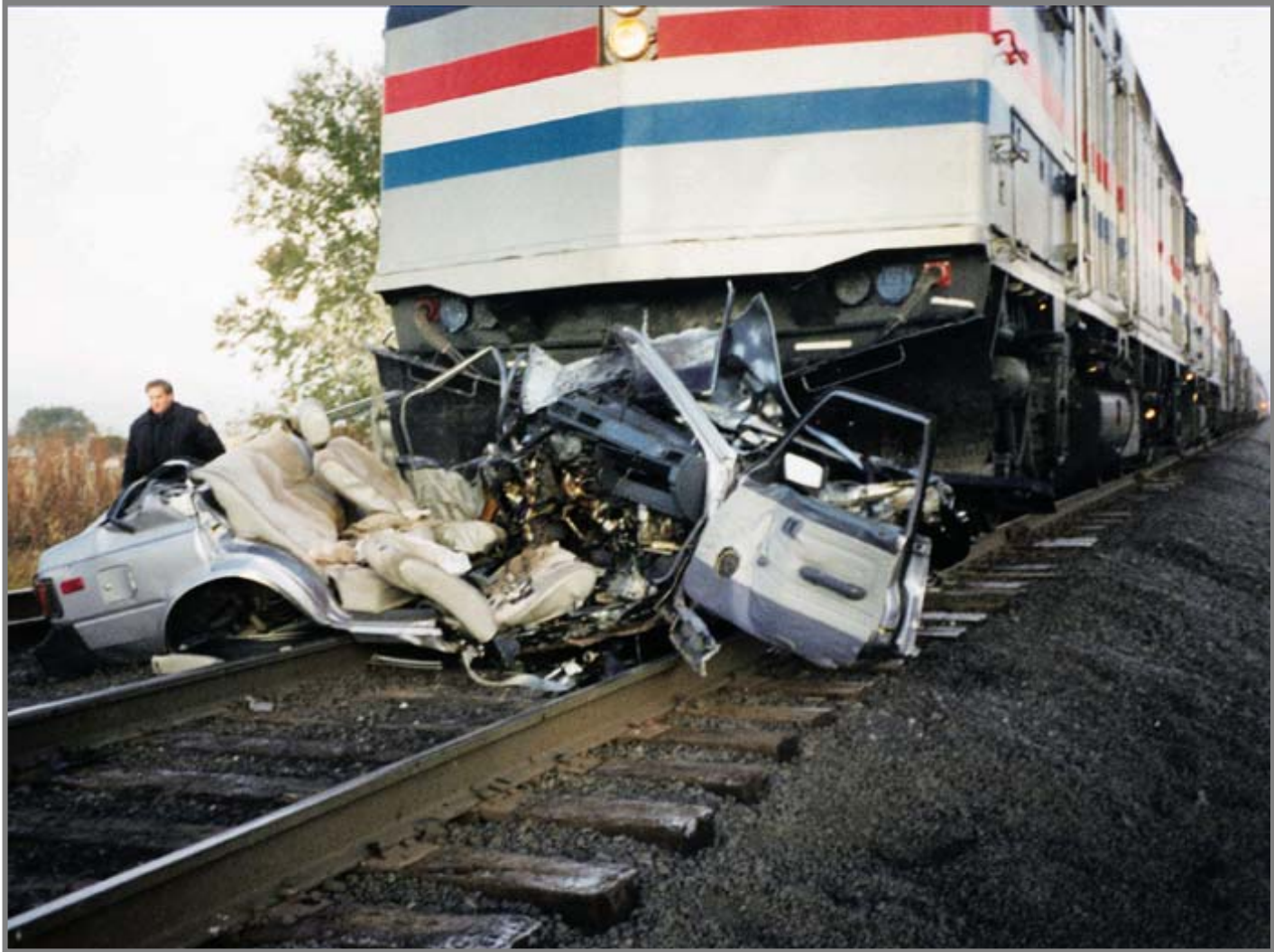


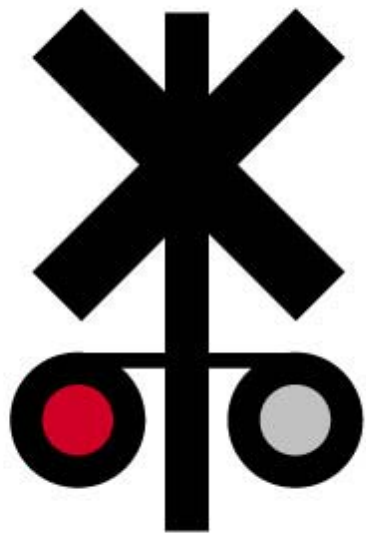












**OPERATION  
LIFESAVER®**

---

**Look, Listen & Live**